

YOUR ESSENTIAL SEARCH & RESCUE ALLY

In dangerous and unpredictable environments, the XSTR-1 UGV is designed to navigate through wreckage and locate those in need. Built for extreme durability and adaptability, it squeezes through tight spaces and powers through resistance with increased force, ensuring its ability to overcome tough conditions

Key Features

► Payload Capability

Life Detection & Essential Support Transports life-detecting sensors to locate survivors during rescue missions while also carrying critical life-saving supplies, including first aid kits, food, and water.

► Ultra-Durable Build

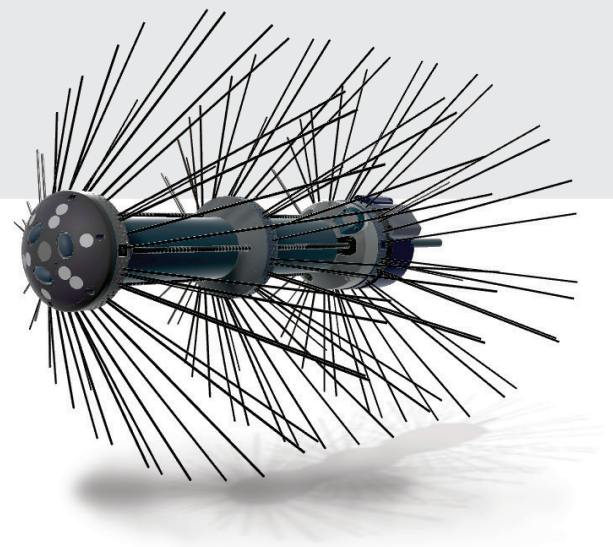
Withstands harsh conditions, debris, and rough terrain

► Adaptive Maneuverability

Designed to navigate through tight spaces; the more resistance it encounters, the stronger its spikes engage

► Real-Time Audio Capture

Integrated microphone allows rescuers to hear survivors and assess situations remotely



► Dual Connectivity

Functions seamlessly over both WiFi and fiber networks

► Multi-Camera System

Front, side, and rear cameras provide full situational awareness

► IR Vision & Flashlight

Operates effectively in total darkness

Enhancing Search and Rescue Capabilities

Whether deployed in earthquake rubble, collapsed buildings, hazardous environments, or confined spaces, XSTR-1 ensures first responders have an extra set of eyes in areas too dangerous for humans to explore

Contact Us

Product Specifications

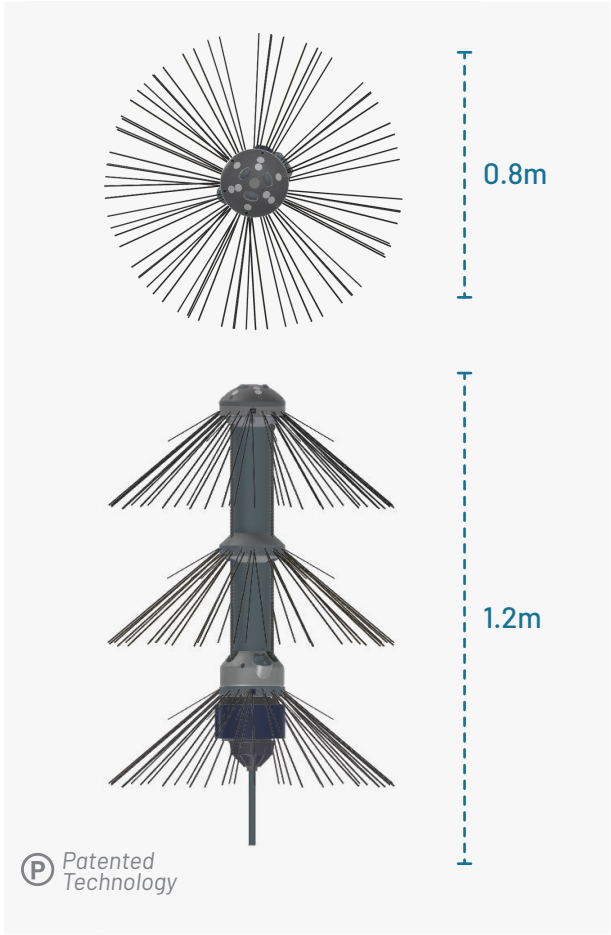
General	
Length	1.2m
Diameter	0.75m
Packed Diameter	0.4m

Performance	
Max Range	1000m
Operating Time	Up to 8 hours
Max Speed	15m/min
Fiber Optic Cable	1000m, 600µm spool
WI-FI	100m radius

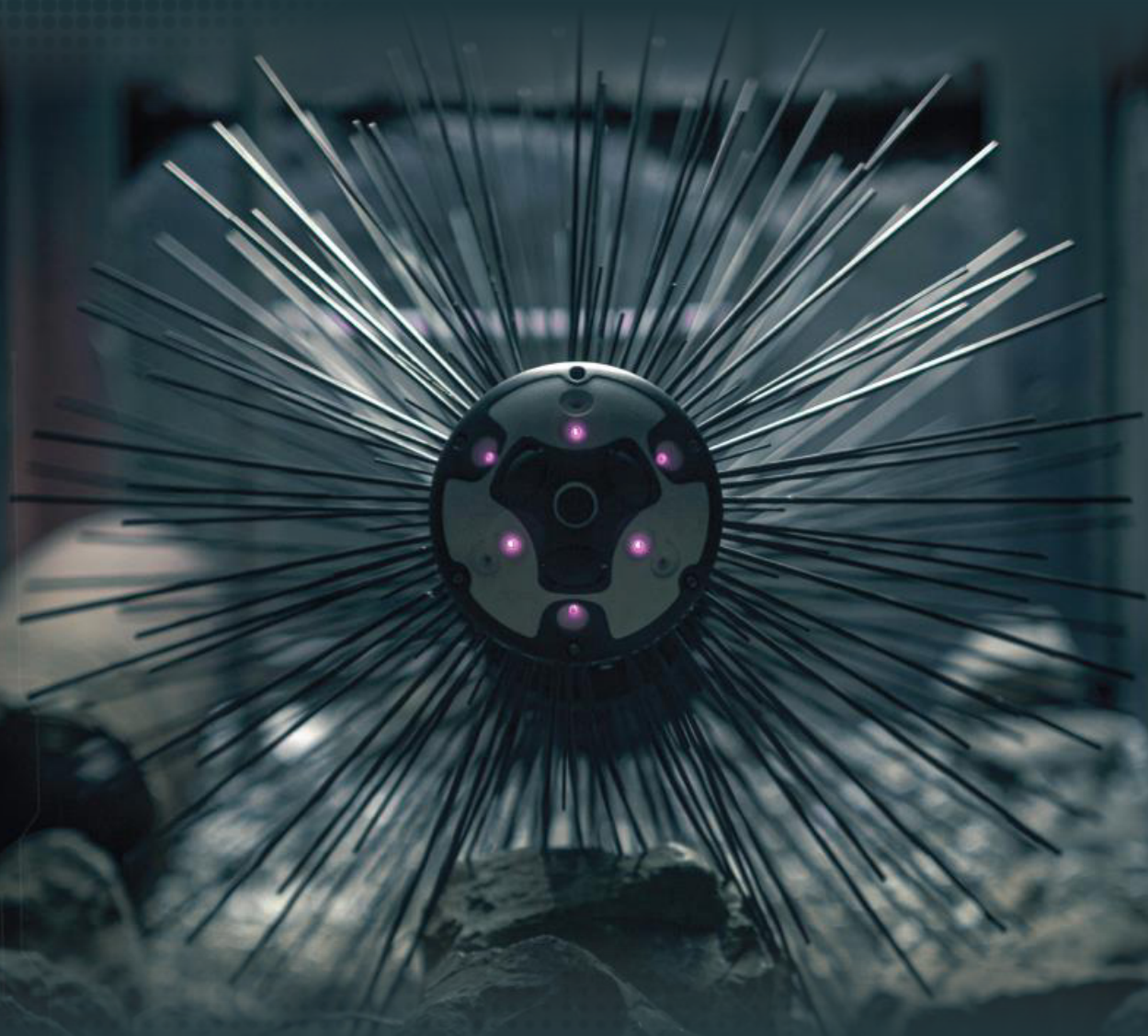
Control Unit	⚡ MIL Standard
Rugged Robotic Controller	G10TG
Display	10.1inches
Certification	CE, FCC

Backpacks	
XSTR-1 Backpack	XSTR-1 ready for operation
Accessories Backpack	Control unit, battery, spool communication box and maintenance tools

Dimensions:



WHEN EVERY MINUTE COUNTS



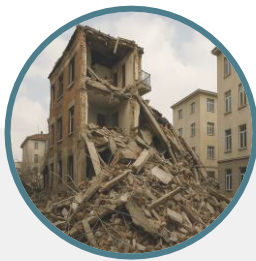
 STR-1.

When Every Minute Counts



MAXIMIZING YOUR SEARCH AND RESCUE EFFORTS

Engineered to locate survivors, the XSTR-1 is built for extreme environments and seamless multi-robot collaboration



- ◀ Autonomous By Design
- ◀ Cost-Effective
- ◀ Extended Operational time
- ◀ Compact
- ◀ Payload agnostic
- ◀ Mesh Connected

